



金纬船舶配件有限公司  
JWA MARINE SPARE PARTS CO.,LTD.

—————> IHI HYD. PRODUCT <—————





JWA MARINE SPARE PARTS CO.,LTD

Professional marine part supplier in China

TEL: +86 (025) 68961064 86443305

FAX: +86 (025) 68961064 Email: Sales@Jwamarine.com

Zhonghua Road 50<sup>TH</sup>, Nanjing, Jiangsu Province, China

---

## ABOUT JWA

---

JWA MARINE SERVICES CO.,LTD. is incorporated at 2005 in Nanjing City. As agency of IHI Chinese factory, the company offer all types IHI hydraulic motor, pump and spare parts for crane, winch, and windlass.

With the continuous development of business, the company has developed partnerships with a lot of famous marine equipment maker, the products include KYB hydrostar hydraulic motor, SMAG Peiner Grab, KAWASAKI steering gear system, Staffa hydraulic motor...etc.

At beginning of year 2009, the company designed and made hydraulic equipment test system, then cooperate with China famous ship broken yards to do second hand hydraulic equipment recondition work. Now the company have a large stock of hydraulic motor and pump, The brands cover IHI, KAWASAKI, MITSUBISHI, HAGGLUNDS, UCHIDA...etc. The reconditioned hydraulic equipment from JWA is now working normally in many vessels. It help ship owner reduce the their budget.

Nowadays the company also supply spare parts for main engine and generator, such as bearing, cylinder cover, cylinder liner, piston, piston rings, valve and valve seats...etc.

With a ten experienced engineers team, the company can offer technical support and repair services on board. And the company also offer hydraulic motor and pump recondition and test services in our own workshop.

With more than 10 years development, JWA MARINE served a lot of vessels all over the world. In the future, the company will keep on offering best product and services to all clients.

**JWA**

JWA MARINE SPARE PARTS CO.,LTD

Professional marine part supplier in China

TEL: +86 (025) 68961064 86443305

FAX: +86 (025) 68961064 Email: Sales@Jwamarine.com

Zhonghua Road 50<sup>TH</sup>, Nanjing, Jiangsu Province, China

## MAJOR CLIENTS

With more than 10 years development, JWA marine have established good cooperation with many ship owners, ship management company and trader all around the world, we will keep on offering our best product and services to all clients safely.



# IHI

As agency of I. H. I. Chinese factory (WMMP), JWA offer full type I. H. I. hydraulic motor, pump and spare parts for deck crane, winch and windlass. And we always keep complete stock for this product to satisfy clients' urgent requirements.

JWA also offer technical consult, repair, recondition and test services for IHI hydraulic motor and pump.

High pressure motor parts include : Cam-ring, casing, rotor, vane, motor shaft, rocker arm, push rod, spring, oil seal, side seal, J-type packing, bearing, valve block, safety valve, seal kits package.

Low pressure motor parts include: casing, side cover, rotor, vane, arch push rod, push rod pin, spring, distance ring, seal kit package.

Pump parts include: casing, vane, rotor, cam-ring, shaft, float plate, bearing, seal kits.

Spare parts for IHI crane, winch and windlass: clutch, coupling, brake block, cable controller, oil cooler, oil filter, remoter (PR30, PR40, MR30), brake lining, brake band, slewing bearing ring, sheaves, gear box, nozzle, electric motor, limit switch, micro switch, contactor, relay, slip ring box, light, meter.... etc.

TYPE	FOR CRANE					FOR WINCH		
HIGH PRESSURE MOTOR	HVL-DSS	HVLG-DSS	HVL-SS	HVLG-SS	HVLP-SS	HVL-STS	HVLG-STS	HVL-A
	HVK-DSS	HVKG-DSS	HVK-SS	HVKG-SS	HVN-DS (DC)	HVK-STS	HVKG-STS	HVK-A
DOUBLE MOTOR	HVLL	HVLK	HVKK					
CONTROL DEVICE	DC-LA-GM	DC-KA-GM	DC-LS-GM	DC-KS-GM	DC-NS-GM	P-LA	P-KA	P-LC
	DC-ND-GM					P-NA	P-KC	P-NC
LOW PRESSURE MOTOR	HL-DSS	HK-DSS	HN-DSS			HL-STS	HK-STS	HL-C
	HL-A	HK-A	HN-A			HN-STS	HK-C	HN-C
LOW PRESSURE PUMP	HPS3	HPS4	HPS5	HPS6	HPS7	HPS8	HPD8-7	
	HPD4-3	HPD4-4	HPD5-4	HPD6-5	HPD7-6	HPD7-7	HPD8-8	
6N PUMP	6N33	6N41	6N48	6N57	6N67			
66N PUMP	66N3333	66N4133	66N4133	66N5733	66N6733	66N4141	66N4841	66N5741
	66N6741	66N4848	66N5748	66N6748	66N5757	66N6757	66N6767	66N5741VS
6P PUMP	6P33	6P41	6P48	6P57	6P67			
66P PUMP	66P3333	66P4133	66P4133	66P5733	66P6733	66P4141	66P4841	66P5741
	66P6741	66P4848	66P5748	66P6748	66P5757	66P6757	66P6767	66P5741VS
DENISON PUMP	T6C	T6D	T6E	T6EC	T6ED			



JWA MARINE SPARE PARTS CO.,LTD

Professional marine part supplier in China

TEL: +86 (025) 68961064 86443305

FAX: +86 (025) 68961064 Email: Sales@Jwamarine.com

Zhonghua Road 50<sup>TH</sup>, Nanjing, Jiangsu Province, China

## TSUJI UCHIDA

Cooperate with TSUJI Chinese factory and ship broken yard, JWA can offer hydraulic motor, pump and spare parts for TSUJI deck crane. The hydraulic motor and pump is from UCHIDA.

HOISTING	A6V500HD6. 2FZ			
MOTOR				
LUFFING	A2FM180/6. 1W	A2F250W5S8	A2F23W3Z6	A2F63W2S8
MOTOR	A6V225HD2FS2	A6VM250HD1/63W	A6VM250DA/61W	A6VM107HZ3/63W
SLEWING	A2F107W1S8	A2F160W2S8	A2F250W5S8	A6V107HD2FS
MOTOR	A6VM 160 HD1/63W			
HOISTING	A4VG180HDD1/32R	A7V117DR1LPPF	A2F010/61R	A2F63R2P3
PUMP	+GSP2-16-980-0			
	A2F107R2P3	A2F160L2P3	A2F160R2P3	A2F182R1P3
	A2F250L5P2	A2V107 HW/EL	A2V225	A4V250
	A4V90	A4V125EL10R	A4VG125HD1D1	A4VG125EP2D1/31LNSF001D
LUFFING	A4VG250HD1	A7V20DR1RPF	A7V20DR1LPPF	A7V107LV20LZF00
&SLEWING	A7V160DR1LPPM0	A7V225LV1RPF	A7V080LRH1/61R-PZB01	A10V16DR1RP8B
PUMP	A10V028DR/31R-PSC12K01	A10VS018DFR1/31R	A10VS028DFR1/31R	A10VS071DFR1/31R
	A10VS0140DRF/31R	A11V0190LRDG/11R		





JWA MARINE SPARE PARTS CO.,LTD

Professional marine part supplier in China

TEL: +86 (025) 68961064 86443305

FAX: +86 (025) 68961064 Email: Sales@Jwamarine.com

Zhonghua Road 50<sup>TH</sup>, Nanjing, Jiangsu Province, China

## KAWASAKI

More than 80 years has passed since Kawasaki Heavy Industries Ltd. began the manufacture of electro hydraulic steering gears in 1924. Wuhan Kawasaki Marine Machinery Co., Ltd has introduced from Kawasaki Heavy Industries Ltd the technical know-bow of series RM and series FM steering gears which can be available for all types of ships ranging from 2000T or over.

Working with KAWASAKI Chinese factory, JWA now offer parts for the KAWASAKI steering gear, KAWASAKI WINCH AND WINDLASS

<i>RM</i>	<i>RM21-032</i>	<i>RM21-036</i>	<i>RM21-045</i>	<i>RM21-051</i>	<i>RM21-063</i>
<i>STEERING GEAR</i>	RM23-070	RM21-085			
<i>FM</i>	FM21-053	FM21-064	FM21-72	FM21-90	FM21-102
<i>STEERING GEAR</i>	FM21-172	FM21-207	FM21-243	FM21-288	FM21-140
<i>RV</i>	RV21-032	RV21-036	RV21-045	RV21-051	RV21-063
<i>STEERING GEAR</i>	RV21-070	RV21-086			
<i>FE</i>	FE21-053	FE21-064	FE21-072	FE21-092	FE21-102
<i>STEERING GEAR</i>	FE21-172	FE21-207	FE21-243	FE21-288	FE21-350
<i>FE</i>	FE21-560	FE21-126	FE21-140	FE21-400	FE21-485
<i>HYDRAULIC MOTOR</i>	SX506AM	SX506BM	SX507BM	SX508AM	SX508BM
	SX510BM	SX510CM	SB508	SB510	SX508CM
	SX510AM				
<i>HYDRAULIC PUMP</i>	B45-4L5KLTTD	B52-4L3KLTTD	B38-4L5KLTTD	B60-4L3KLTTD	B70-4L5KLTTD
	BV725-300R	BZ732-110R	BZ740-110R	BZ740-S100L	BV716-300R
	K3VL28	K3VL45	K3VL60	K3VL80	K3VL112
	K3VG63	K3VG112	K3VG180	K3VG280	K3VG180DT
	K3V112DT	K3V140DT	K3V180DT (H)	K3V280DTH	K3VL140
	K3VL200	K3VG280DT	K3V63DT		



JWA MARINE SPARE PARTS CO.,LTD

Professional marine part supplier in China

TEL: +86 (025) 68961064 86443305

FAX: +86 (025) 68961064 Email: Sales@Jwamarine.com

Zhonghua Road 50<sup>TH</sup>, Nanjing, Jiangsu Province, China

## STAFFA

Cooperate with Chinese famous hydraulic motor manufacturer and ship broken yard, JWA can offer reconditioned KAWASAKI STAFFA hydraulic motor and OEM motor. JWA also offer repair package for these type motors.

<i>STAFFA (SINGLE SPEED)</i>	<i>STAFFA (DOUBLE SPEED)</i>	<i>KAWASAKI STAFFA (SINGLE SPEED)</i>	<i>KAWASAKI STAFFA (DOUBLE SPEED)</i>
HMB010	HMC030	HMKB010	HMKC030
HMB030	HMC045	HMKB030	HMKC045
HMB045	HMC080	HMKB045	HMKC080
HMB080	HMC125	HMKB080	HMKC125
HMB100	HMC200	HMKB100	HMKC200
HMB125	HMC270	HMKB125	HMKC270
HMB150	HMC325	HMKB150	HMKC325
HMB200		HMKB200	
HMHDB200		HMHDKB200	
HMB270		HMKB270	
HMHDB270		HMHDKB270	
HMB325		HMKB325	
HMHDB400		HMHDKB400	
HMB700		HMKB700	



JWA MARINE SPARE PARTS CO.,LTD

Professional marine part supplier in China

TEL: +86 (025) 68961064 86443305

FAX: +86 (025) 68961064 Email: Sales@Jwamarine.com

Zhonghua Road 50<sup>TH</sup>, Nanjing, Jiangsu Province, China

## SMAG PEINER

Cooperate with SMAG Chinese factory, JWA can offer spare parts for SMAG PEINER grab, include cable drum, rope drum, turbocoupler, lifting cylinder, guide sheaves, seal kits package. Meanwhile JWA also offer repair services for the grab and drum.

GRAB TYPE	MZGL-1000-3	MZGL-1000-3-L	MZGL-1000-4	MZGL-1000-4-L	MZGL-1000-6	MZGL-1000-6-L
	MZGL-1250-3	MZGL-1250-3-L	MZGL-1250-4	MZGL-1250-4-L	MZGL-1250-6	MZGL-1250-6-L
	MZGL-1600-3	MZGL-1600-3-L	MZGL-1600-4	MZGL-1600-4-L	MZGL-1600-6	MZGL-1600-6-L
	MZGL-2000-3	MZGL-2000-3-L	MZGL-2000-4	MZGL-2000-4-L	MZGL-2000-6	MZGL-2000-6-L
	MZGL-2500-3	MZGL-2500-3-L	MZGL-2500-4	MZGL-2500-4-L	MZGL-2500-6	MZGL-2500-6-L
	MZGL-3200-3	MZGL-3200-3-L	MZGL-3200-4	MZGL-3200-4-L	MZGL-3200-6	MZGL-3200-6-L
	MZGL-4000-3	MZGL-4000-3-L	MZGL-4000-4	MZGL-4000-4-L	MZGL-4000-6	MZGL-4000-6-L
	MZGL-5000-3	MZGL-5000-3-L	MZGL-5000-4	MZGL-5000-4-L	MZGL-5000-6	MZGL-5000-6-L
	MZGL-6300-3	MZGL-6300-3-L	MZGL-6300-4	MZGL-6300-4-L	MZGL-6300-6	MZGL-6300-6-L
	MZGL-8000-3	MZGL-8000-3-L	MZGL-8000-4	MZGL-8000-4-L	MZGL-8000-6	MZGL-8000-6-L
	MZGL-10000-3	MZGL-10000-3-L	MZGL-10000-4	MZGL-10000-4-L	MZGL-10000-6	MZGL-10000-6-L
	MZGL-12500-3	MZGL-12500-3-L	MZGL-12500-4	MZGL-12500-4-L	MZGL-12500-6	MZGL-12500-6-L
	MZGL-14000-3	MZGL-14000-3-L	MZGL-14000-4	MZGL-14000-4-L	MZGL-14000-6	MZGL-14000-6-L
	MZGL-16000-3	MZGL-16000-3-L	MZGL-16000-4	MZGL-16000-4-L	MZGL-16000-6	MZGL-16000-6-L
	MZGL-18000-3	MZGL-18000-3-L	MZGL-18000-4	MZGL-18000-4-L	MZGL-18000-6	MZGL-18000-6-L
SHEAVE TYPE	URN350	URN500	URN660	UR350	UR500	UR660
	LRN350	LRN500	LRN660	LR350	LR500	LR660
DRUM TYPE	KSM-2-B0	KFM-8-600-11B0				
TURBOCOUPLER	274T	206T				
SEAL KIT TYPE	V30D-095-BKN-LLS-2		V30B-128RKN-10-PD3			





JWA MARINE SPARE PARTS CO.,LTD

Professional marine part supplier in China

TEL: +86 (025) 68961064 86443305

FAX: +86 (025) 68961064 Email: Sales@Jwamarine.com

Zhonghua Road 50<sup>TH</sup>, Nanjing, Jiangsu Province, China

## KYB HYDRAULIC MOTOR

The Hydrostar® Motor is a Radial Piston design that provides a Low Speed High Torque (LSHT) output. This very durable workhorse is used in a wide variety of applications from Fishing to Forestry, Mining to Marine, Recycling to Shredders, as well as Conveyors and Railroad Equipment.

JWA always keep stock for some type of Hydrostar motor and work as agency of KYB JOBAN factory, we also offer seal kits package for KYB motor.

TYPE	MODLE (METRIC)	MODLE (BRITISH)	DISPLACEMENT (cm <sup>3</sup> /rev)	MAX PRESSURE (Mpa)	SPEED (RPM)	TORQUE (N M)	MASS (KG)
SINGLE	MRH-220	MRH-12	208	24.5	600	730	37
SPEED	MRH-550	MRH-30	498	24.5	500	1770	78
MOTOR	MRH-750	MRH-45	745	24.5	400	2700	115
	MRH-1350	MRH-60	1357	24.5	300	4820	165
	MRH-1500	MRH-80	1530	24.5	300	5590	165
	MRH-2200	MRH-95	2195	24.5	220	8040	225
	MRH-3150	MRH-135	3140	24.5	175	11480	280
	MRH-4400	MRH-190	4398	24.5	175	15790	372
	MRH-6200	MRH-270	6186	24.5	120	22190	520
	MRH-8600	MRH-375	8590	20.6	60	26490	770
DOUBLE	MRH2-750	MRH2-45	745	24.5	600	2619	132
SPEED	MRH2-1500	MRH2-95	1530	24.5	450	5494	190
MOTOR	MRH2-2200	MRH2-135	2195	24.5	330	7897	250
	MRH2-3150	MRH2-190	3140	24.5	260	11478	315
	MRH2-4400	MRH2-270	4398	24.5	240	16794	408
	MRH2-6200	MRH2-375	6186	24.5	180	22073	545



JWA MARINE SPARE PARTS CO.,LTD

Professional marine part supplier in China

TEL: +86 (025) 68961064 86443305

FAX: +86 (025) 68961064 Email: Sales@Jwamarine.com

Zhonghua Road 50<sup>TH</sup>, Nanjing, Jiangsu Province, China

## HAGGLUNDS

With large stock of reconditioned hydraulic motor and cooperate with China famous hydraulic maker, JWA can offer Hagglunds CA and VIKING hydraulic motor.

<i>VIKING</i>	<i>MK-44-03300</i>	<i>MK-44-04700</i>	<i>MK-44-06800</i>	<i>MK-44-09200</i>
	MK-64-11100	MK-64-13500	MK-64-16300	
	MK-84-14800	MK-84-17900	MK-84-21300	MK-84-25100
	MK-84-38000	MK-84-22300	MK-84-33800	MK-84-25100
	MK-84-38000	MK-84-25100	MK-84-38000	
	MB-44-03300	MB-44-04700	MB-44-06800	MB-44-09200
	MB-64-11100	MB-64-13500	MB-64-16300	
	MB-84-14800	MB-84-17900	MB-84-21300	MB-84-25100
	MB-84-38000	MB-84-22300	MB-84-33800	MB-84-25100
	MB-84-38000	MB-84-25100	MB-84-38000	
CA	CA 50 20	CA 50 25	CA 50 32	CA 50 40
	CA 70 40	CA 70 50	CA 70 60	
	CA 100 40	CA 100 50	CA 100 64	CA 100 80
	CA 140 80	CA 140 100	CA 140 120	
	CA 210 160	CA 210 180		



JWA MARINE SPARE PARTS CO.,LTD

Professional marine part supplier in China

TEL: +86 (025) 68961064 86443305

FAX: +86 (025) 68961064 Email: Sales@Jwamarine.com

Zhonghua Road 50<sup>TH</sup>, Nanjing, Jiangsu Province, China

## JAM AIR MOTOR

JWA offer JAM air motor for the gangway ladder, and JWA can also offer these type motor from Korea and China OEM.

<i>JAM-1PE-900S</i>	<i>JAM-1PE-750S</i>	<i>JAM-1PE-600S</i>	<i>JAM-1PE-450S</i>	<i>JAM-1PE-300S</i>
JAM-2. 5PE-900S	JAM-2. 5PE-750S	JAM-2. 5PE-600S	JAM-2. 5PE-450S	JAM-2. 5PE-300S
JAM-3. 5PE-900S	JAM-3. 5PE-750S	JAM-3. 5PE-600S	JAM-3. 5PE-450S	JAM-3. 5PE-300S
JAM-4. 5PE-900S	JAM-4. 5PE-750S	JAM-4. 5PE-600S	JAM-4. 5PE-450S	JAM-4. 5PE-300S
JAM-5. 5PE-900S	JAM-5. 5PE-750S	JAM-5. 5PE-600S	JAM-5. 5PE-450S	JAM-5. 5PE-300S

## TOKIMEC

JWA can offer TOKIMEC SQP type vane pump, include Japan original and Chinese OEM.

<i>SQP1-3-86C-18</i>	<i>SQP1-6-86C-18</i>	<i>SQP2-14-86C-18</i>	<i>SQP2-19-86C-19</i>
SQP3-30-86C-18	SQP4-38-86C-18	SQP21-12-7-1DC	SQP21-10-6-1DC
SQP31-21-12-86AA	SQP31-25-6-86CB	SQP32-32-21-86BB-18	SQP41-60-12-86CB-18
SQP43-30-25-86BB-18	SQP21-17-4-1DC-18	SQP32-35-14-86DC-18	SQP32-25-14VQ-86DC

## NACHI

JWA can offer NACHI gear pump, IPH type pump include single pump and double pump.

<i>IPH-3A-16-20</i>	<i>IPH-3B-10-20</i>	<i>IPH-3B-13-20</i>	<i>IPH-3B-16-20</i>
IPH-55B-40-40-11	IPH-55B-40-50-11	IPH-55B-40-64-11	IPH-55B-50-50-11
IPH-56B-40-80-11	IPH-56B-40-100-11	IPH56B-40-125-11	IPH-56B-50-80-11
IPH-56B-50-100-11	IPH-56B-50-125-11	IPH-56B-64-80-11	IPH-56B-64-100-11
IPH-56B-64-125-11	IPH-66B-80-100-11	IPH-66B-80-125-11	IPH-66B-100-100-11
IPH-66B-100-125-11	IPH-66B-125-125-11	IPH-23B-5-16-11	IPH-23B-6.5-10-11

## SAI

SAI is the world famous hydraulic motor manufacturer, their product is used for winch and windlass, JWA can offer SAI complete hydraulic motor and spare parts

<i>MODEL</i>	<i>MODEL EXAMPLE</i>	<i>MODEL</i>	<i>MODEL EXAMPLE</i>
BD1	BD1 250-125 9H D40	GM05	GM05 75 1H D40
BV1	BV1 250-125 9H D47V	GM1	GM1 200 1H D40
BD2	BD2 500-250 9H D40	GM2	GM2 200 1H D40
BV2	BV2 500-250 9H D47V	GM3	GM3 200 1H D40
BD3	BD3 550-130 9H D40	GM4	GM4 200 1H D41
BD5	BD5 1500-400 9EG D90	GM5A	GM5A 200 1H D42
BD6	BD6 1700-420 9G D250	GM6	GM6 200 1H D43
BD6A	BD6A 3000-760 1G D90	GS2	GS2 200 1H D47R
GS05	GS05 75 1H D47R	GS3	GS3 200 1H D47R
GS1	GS1 200 1H D47R	GS4	GS4 200 1H D47R
GS5	GS5 200 1H D47R	GS6	GS6 200 1H D47R



JWA MARINE SPARE PARTS CO.,LTD

Professional marine part supplier in China

TEL: +86 (025) 68961064 86443305

FAX: +86 (025) 68961064 Email: Sales@Jwamarine.com

Zhonghua Road 50<sup>TH</sup>, Nanjing, Jiangsu Province, China

## REXROTH

As REXROTH sales partner, JWA can offer REXROTH hydraulic motor, pump, and solenoid valve.

HYDRAULIC PUMP				HYDRAULIC MOTOR			
A4VG28	A11V095	A4VS040	A2F107	A2FE45	A2F28	A6VE160	A2FM180
A4VG40	A11V0130	A4VS071	A2F125	A2FE56	A2F45	A6VM55	A6V55
A4VG56	A11V0145	A4VS0125	A2F160	A2FE63	A2F55	A6VM80	A6V63
A4VG71	A11V0190	A4VS0180	A2F200	A2FE80	A2F63	A6VM107	A6V80
A4VG90	A11VL0260	A4VS0250	A2F250	A2FE90	A2F80	A6VM160	A6V107
A4VG125	A10V028	A2VK12	A2F500	A2FE107	A2F107	A6VM200	A6V125
A4VG140	A10V045	A2VK28	A7V20	A2FE125	A2F125	A2FM16	A6V160
A4VG180	A2F016	A2VK55	A7V28	A2FE160	A2F160	A2FM23	A6V200
A4VG250	A2F023	A2VK107	A7V40	A2FE180	A2F200	A2FM28	A6V225
A10VS018	A2F032	A2F10	A7V55	A6VM55	A2F225	A2FM32	A6V250
A10VS028	A2F045	A2F12	A7V58	A6VM80	A2F250	A2FM56	A6V355
A10VS045	A2F080	A2F23	A7V78	A6VM107	A2F355	A2FM63	A6V500
A10VS071	A2F0125	A2F28	A7V80	A6VM160	A2F500	A2FM80	
A10VS0100	A2F0160	A2F45	A7V107	A6VM200	A6VE28	A2FM90	
A10VS0140	A2F0180	A2F55	A7V117	A2F10	A6VE55	A2FM107	
A11V060	A2F0250	A2F63	A7V160	A2F12	A6VE80	A2FM125	
A11V075	A7V500	A2F80	A7V250	A2F23	A6VE107	A2FM160	

## MACGREGOR

With our large hydraulic equipment stock and Chinese MacGregor factory's help, JWA can offer hydraulic motor, hydraulic pump, gearbox, packing, sprocket wheel and other parts for MacGregor Hatch cover and deck crane.

## EATON

EATON company is the famous hydraulic equipment maker in worldwide market, It' s hydraulic motor is used for hatch cover and deck crane. JWA can offer most models of this type hydraulic motor.

<i>MOTOR WITHOUT BRAKER</i>		<i>MOTOR WITH BRAKER</i>
ME100	ME1300A	MB100-C40
ME150	ME1900	MB150AP100
ME175	ME2600	MB175AP100
ME300B	ME3100	MB300BP150
ME350B	ME4100	MB350BP150
ME600B	MK300	ME600BCS2550+BB250BC
ME750B	MK600	ME750BCS2560+BC300-C
ME850B		ME850BCS2570+BC300-C
		MK300-FS001+BP121-C
		MK600-NS002+BR250-C

## MITSUBISHI

JWA can offer hydraulic motor and pump for MITSUBISHI deck crane, winch and windlass

<i>HYDRAULIC MOTOR</i>	<i>AMC-30A-M2</i>	<i>RMC-210A-L-22Y</i>	<i>RMM-350A-L-22VR</i>
	RMC-350A-L-22Y	RMM-210/84A-L-22PD	RMM-350 105A-L-22VD
	RMC-350A-L-11	RMM-210/84A-L-22VD	M20B-SM2-25D
	RMM-350A-L-22VR	RMM-350 105A-L-22VD	M20B-SM2-25D
	M35A-SM1-21Y	M35B-SM2-25D	TMC-55A-M
	TMK-33A-M		
<i>HYDRAULIC PUMP</i>	1V-FH2B-MK-RFBLA20D11		





JWA MARINE SPARE PARTS CO.,LTD

Professional marine part supplier in China

TEL: +86 (025) 68961064 86443305

FAX: +86 (025) 68961064 Email: Sales@Jwamarine.com

Zhonghua Road 50<sup>TH</sup>, Nanjing, Jiangsu Province, China

## DENISON

Cooperating with PARKER DENISON HYDRAULIC (CHINA), JWA can offer all type DENISON hydraulic pumps and spares of the pump. All the pumps JWA offer is with PARKER DENISON TEST REPORT. For the general type, the delivery time will be within one week.

<i>SERIALS</i>	<i>TYPE EXAMPLE</i>	<i>SERIALS</i>	<i>TYPE EXAMPLE</i>	<i>SERIALS</i>	<i>TYPE EXAMPLE</i>
T6C	T6C-022-1R00-B1	T67BB	T67BB(W)-B10-B10-1R00-A100	T6DC	T6DC-045-045-1R01-B1
T7BB	T7BB-B10-B10-1R00-A1	T67CB	T67CB(W)-B10-B10-1R00-A100	T6ED	T6ED-085-020-1R00-B1
T6E	T6E-052-1R00-A1	T67DB	T67DB-042-B12-1R00-A1	T7DS	T7DS-B42-1R00-A1
T6D	T6D-042-1R00-B1	T7DBS	T7DBS-042-B12-1R00-A1	T7DBS	T7DBS(W)-B42-B10-1R00-A1
T6DR	T6DR-072-1R00-B1	T7EBS	T7EBS-042-B12-1R00-A1	T67DC	T67DC-045-045-1R01-B1
T6CR	T6CR-052-1R00-B1	T67CB	T67CB(W)-010-B10-1R00-A100	T7EDS	T7EDS-042-B22-1R00-A1
T7B	T7B-B10-1R00-A1	T6CC	T6CC(W)-022-008-1R00-C100	T7ES	T7ES-072-1R00-A1
T6ER	T6ER-052-1R00-A1	T6DC	T6DC(W)-038-010-1R00-B1	T7EBS	T7EBS-072-1R00-A1
T7EEC	T7EEC-052-052-025	T67DC	T67DC(W)-B42-010-1R00-A1	T6EE	T6EE 062 045 2L01
T6EEC	T6EEC-052-052-025	T6EC	T6EC-025-052-1R00-B1	T6ED	T6ED-045-045-1R01-B1
T67B	T67B-B10-1R00-A100	T67DB	T67DB(W)-028-B10-1R00-A100	T7EDS	T7EDS-045-045-1R01-B1



JWA MARINE SPARE PARTS CO.,LTD

Professional marine part supplier in China

TEL: +86 (025) 68961064 86443305

FAX: +86 (025) 68961064 Email: Sales@Jwamarine.com

Zhonghua Road 50<sup>TH</sup>, Nanjing, Jiangsu Province, China

## MARINE ENGINE PARTS

Cooperate with Chinese main engine manufacturer, JWA can offer spares for main diesel engine and auxiliary engine, such as cylinder head, cylinder liner, piston, piston rings, plunger, fuel injector, inlet&outlet valves. JWA also offer spares for the turbocharger matched the engine. With large stocks, the delivery time is very short.

MARKER	MODEL
DEUTZ	BF6M716, BA8M528, RBV12M350, BA6M528, 6M540, R8U12M35, RBV12M35
YANMAR	KFL-HT, KFL-UT, S165L-HT, 6RAL-HT, S185L-ST, 6UL-UT, 6MAL-HTS, M20L-UT, T220L-UT, GL-UT, 6EL-UT, S28LH-4, 6HA130, 6HA140, 5KDL, 6KFL-ST, 5T21LH, 6GL-HT240, Z28, 6UL-32, 6KGL
DAIHATSU	6PKTB-16A, DS-18A, DL-19, 6DL-20, PS-22, DL-22, 6PSHTC-26D, DL-26, DL28, DK28, PS-18, 6PS-22, 6PSM22, 6DLM-22, PSM26, PS26H, PS26D, DS-26, D830, PS-30, 6DS-32
B&W	5T23LH, L28/32, L23/30, L35MC, 50VT2BF110, 2MTBH-40, K45GF, S35MC, 6L350PN, L42MC, L50MCLE, L60MC
MAN	G6V23.5/33, 8AL25/30, 30/45, RU16/18, 7.5/22, 22/30, 52/55,
SKL	6NVD36/24, 6NVD36-IU, 8RD36/24A-1, 8NVD48-IU,
RUSSIA	6HH25/34, 8HH25/34
HANSHIN	6LUN28AR, 6EL30, 6LU32, 6ELS32, 6LU35, 6EL35, 6LU38, 6EL40, 6LUD-26, 6EL38, 6LU46, 6EL50, EL320, ELS44, 6LU50, 6LU54
NIIGATA	6M31AFT, L25CXE, 6M26AFTE, MS27ASC, 6M34AFT, 12SVA, 8SH24AG-30, 6M24EGF, 6M331/AR, 6M26EG, 6M31AGF,
MAKITA	GSLH633, GSLH637, GSLH6275, GSLH300, ESHC640, KSLH630
AKASAKA	A34, A37, DM30FD, A31, DM33, A34, AH36, DM36, A28, 6DM33, A340, AH36, A45
MAK	DM38AK, 8MU551/AK, MAK552AK, MAK95-35, MAK551,
PIELSTICK	PC2-2V, PC2-2L, PA5, PC2-5, PC2-6,
MITSUBISHI	UET45/75C, UET45/80D, 8SH24AC, 6UE67/88, UEC37/88, 6UEC45T754, 6UET45/80D, 6UET5290D, 6UEC125-1, UEC60/150H
CATERPILLAR	4SN3L
MWM	MWM500, 36/45
SULZER	RT38, RT48, RT52, RTA58, RT580, RT76



JWA MARINE SPARE PARTS CO.,LTD

Professional marine part supplier in China

TEL: +86 (025) 68961064 86443305

FAX: +86 (025) 68961064 Email: Sales@Jwamarine.com

Zhonghua Road 50<sup>TH</sup>, Nanjing, Jiangsu Province, China

## BEARING SHELL

Cooperate with the bearing manufacturer, JWA can offer bearing shells for Main engine and auxiliary engine.

<i>BRAND</i>	<i>MODEL</i>
AKASAKA	AH30, DM33, DM36W, DM40, A41
B&W	280, S42MC, KLS60MC, ALPHAL12V28L, S50MC, S60MC
DAIHATSU	PS18, PS20, PS26D(H), PS26V, PS30, DS18A, DS22, DS26, DS28, DS32, DL20, DL22, DL26, DL28, PK16, DK20, DK28, DK26, DL19
DEUTZ	358, 350, 540, 528, R8VM545, 545
HANSHIN	LU26, LU28G, LU28, LUN28ARG, LU32, LU35, LU38, LU46A, LU50A, LU54, EL32, EL38, EL40, LU35-Z
MAK	281/351, 332, 451, 453, 453V, 551, 551V, 552, MV601AK, M35,
WARTSILA	R20, R22, R22/26, T24
MITSUBISHI	5SH24AC, UEC45L
BERGEN	RTG6, LDG6
MAN	T23L L23/30 T23LH-4E, T23HH, T23LH-2E, L23H, T28, L28/32, ME6L28/32, V8V22/30, G5V30/42AL, V40/54, L40/54, 52/55, 5L16/24, LV20/27, L20/27, G6V23.5/33ATL, 6S28LH-4, V23.5/33A, V30/45, 90/160,
RUSSIA	8H25/34-2, CHN18/22
MWM	TBD440, TBRHS345
NIIGATA	L20X, 8L25BX, 6M28GX, 6M31AFTE, M26KGHS, M28AFTE, M28AGTE, M30AGT, MG31X, M31EZ, M34AFT, M34AGT
SWD	TMABS270, TMABS390, Dro218
PIELSTICK	PC2.2/2.3, PC2.5/2.6, PC25-400, PC4V, PC4-2, 40/46, PA6L, 6PA5L, 12VPA6, PA4V-200
SKL	NVD21, NVD26, NVD36, NVD48, VD26/20
SULZER	5AL25/30, 6AL25/30, 5AL25/30, AL20/24, L40/48, RD68
YANMAR	6KFL145, KFL/KDL, 6RAL-170, 6RL, 6MAL-HT, DT/UT, M200-AL, 6AL-UT, ST/HT, GL-ST, HT/DT/UT, ET/VT-240, T220, 6HAL-TN, M6AL-130, T260, 280, Z280L-ST, M220, LAM-UTE, SC25N, 6UL-UT, S165, S185, N18

## RECONDITION SERVICES

JWA have more than 10 years experience on repair ,recondition, overhaul and test hydraulic motor and pumps, the company location is near Shanghai port, Jiangyin port, Zhangjiagang port. So we can offer very fast services to get your equipment to our warehouse to do recondition and take it back on board.



## REPAIR SERVICES

With more than 10 years development, JWA own an experienced engineer team. The company location is near Shanghai port, Jiangying port, Zhangjiagang port, so JWA is capable to offer good repair services for windlass, mooring winch, deck crane, marine hydraulic system, Main engine remote control system, navigation and telecommunication equipment..etc.





JWA MARINE SPARE PARTS CO.,LTD

Professional marine part supplier in China

TEL: +86 (025) 68961064 86443305

FAX: +86 (025) 68961064 Email: Sales@Jwamarine.com

Zhonghua Road 50<sup>TH</sup>, Nanjing, Jiangsu Province, China

## WHERE WE ARE

### JWA MARINE SERVICES CO.,LTD.

ADD:Zhonghua road 50th, Nanjing City, Jiangsu Province, China

TEL:+86-25-68961064

FAX:+86-25-68661061

EMAIL: sales@jwamarine.com(sales), jwamarine@gmail.com(general affairs),  
account@jwamarine.com(account)

SKYPE: william-jwa

P.C.:210001



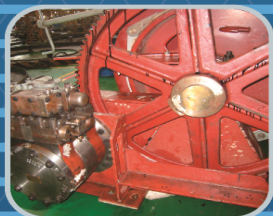
### SERVICE PORTS

CAO FEIDIAN
QING HUANGDAO
TIAN JIN
DA LIAN
QING DAO
LIAN YUNGANG
NAN JING
ZHANG JIAGANG
JIANG YIN
CHANG SHU
NAN TONG
SHANG HAI
YANG SHAN
NING BO
ZHOU SHAN
GUANG ZHOU
HONG KONG





**金纬船舶配件有限公司**  
JWA MARINE SPARE PARTS CO.,LTD.



---

江苏省南京市中华路50号  
Zhonghua Road 50#, Nanjing City, Jiangsu Province, China  
Tel:+86-25-6896 1064,8713 9164  
Fax:+86-25-68661061  
E-mail:sales@jwamarine.com